





A close-up photograph of a technician wearing a blue shirt and safety glasses, working on a dense network of white cables. The technician's hands are visible, holding and organizing the cables. The background is slightly blurred, showing more of the server room environment.

**Make the most of
the current assets
with Panasonic new
digital telephones**

- Thank you for evaluating our next-generation DT635/680 Digital Phones!
 - Please use these phones in your office – they are pre-production and not for customer deployment
 - They are intended for evaluation and feedback before launch
 - They must be destroyed within 1 year of receipt.
- Requires firmware upgrade to function
 - Main unit v8.2x
 - DLC/DHLC v 8.x
 - Stack card v8.x
 - To be provided by TFM
- Do not upgrade other units until official release
- Any unit that was upgraded will need to be upgraded immediately upon official release
- Until the product is officially released, if you have any technical problems, please contact your TFM.
 - Do NOT call BTS technical support.
- Look for a survey from us shortly for your feedback

Specifications

	KX-DT680	KX-DT546	KX-DT635	KX-DT543	KX-NT680	KX-NT630
						
LCD for call control and soft key	Color 480 x 272 pixel	6 - line	3 - line	3 - line	Color 480 x 272 pixel	3 - line
LCD for Flexible Key Labeling		N/A (paper)	3 - line	N/A (paper)		3 - line
LED for Flexible Key		Yes	Yes	Yes		Yes
LCD Backlight		Yes	Yes	Yes		Yes
LCD Contrast	4 Levels	4 Levels	4 Levels	4 Levels	4 Levels	4 Levels
Flexible Key	12 x 4 Pages	24	6 x 4 Pages	24	12 x 4 Pages	6 x 4 Pages
Optional DSS Console	No*2	Yes	No*2	Yes	No	No
Audio Headset port (2.5mm jack)	Yes	Yes	Yes	Yes	Yes	Yes
EHS (Electric Hook Switch) port	Yes	Yes	Yes	Yes	Yes	No
Bluetooth (Built-in)	No	No	No	No	Yes	No
Optional AC Adaptor	Not required	Not required	Not required	Not required	Yes / PoE	Yes / PoE
XDP / Digital XDP	No	Yes	No	Yes	N/A	N/A
Image File Display	Yes	No	No	No	Yes	No
Firmware Update	Yes*3	No	Yes	No	Yes	Yes
Supported PBX	NS/NSX*1	TDE/NCP/NS	NS/NSX*1	TDE/NCP/NS	NS/NSX	NS/NSX

*1 NSX will be supported in v5.2 expected in 1Q 2021

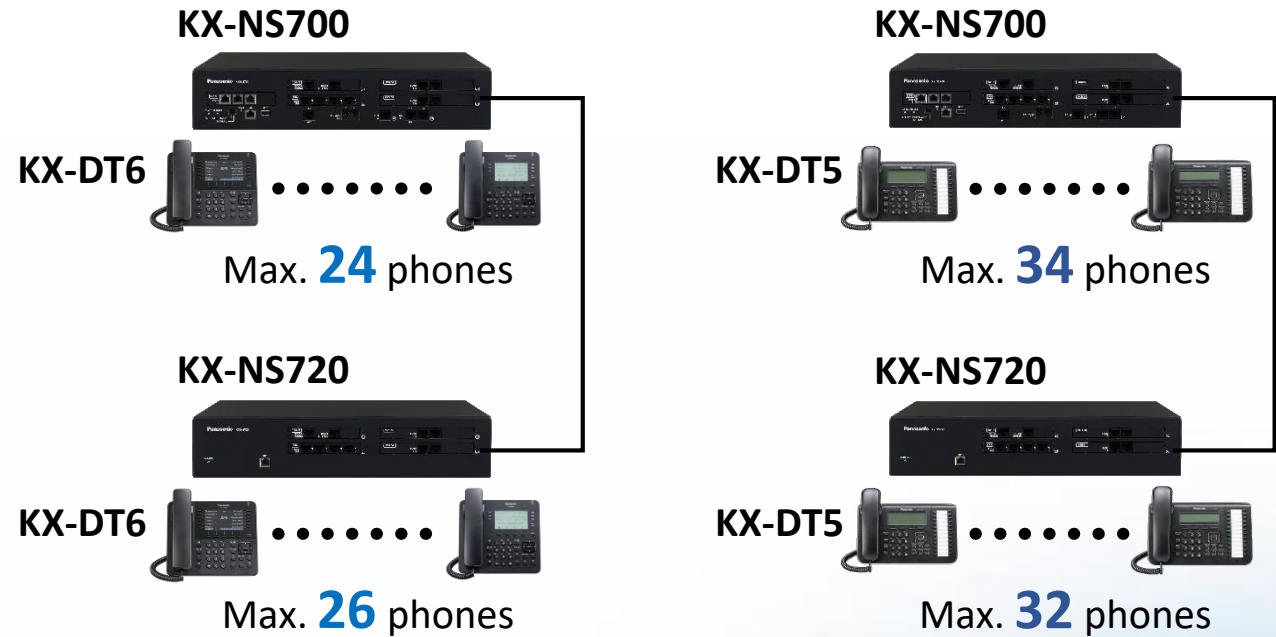
*2 DT590 can be used with separate connection

*3 Filename is different than NT680

Conditions : Number of Phones per System

KX-DT6 phones consume more power than previous KX-DT models, e.g. KX-DT5 phones, and the maximum number of KX-DT6 phones for one KX-NS700 cabinet is 24, whereas that of KX-DT5 phones is 34 when digital XDP is not used.

Therefore KX-NS720 will be required when a customer needs more than 24 KX-DT6 phones on KX-NS700. One KX-NS720 cabinet supports up to 26 KX-DT6 phones.



Conditions : Digital XDP

KX-DT6 phones do not have Digital XDP port and cannot be connected via Digital XDP port of another KX-DT phone either.

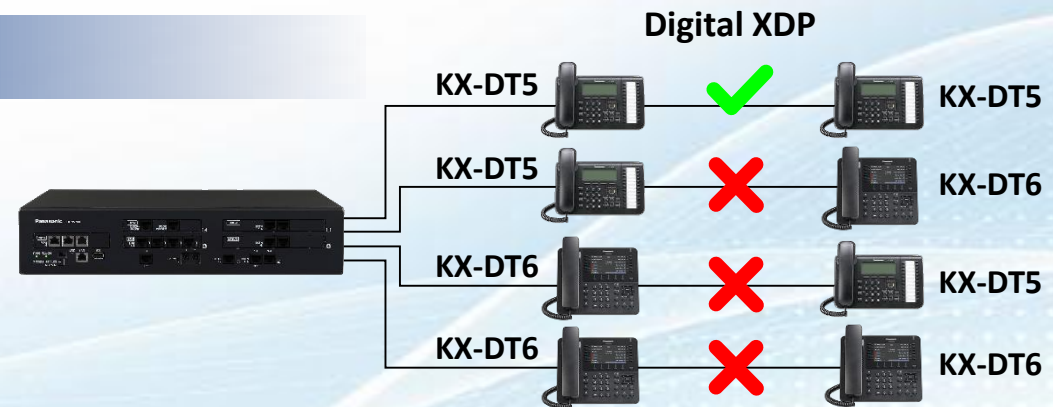



Image File Preparation (Example)

Step 1) Make a picture using MS Power Point or Excel for example. 

Step 2) Copy it by [Alt] + [Print Screen] and paste it by [Ctrl] + [V] to MS Paint. 

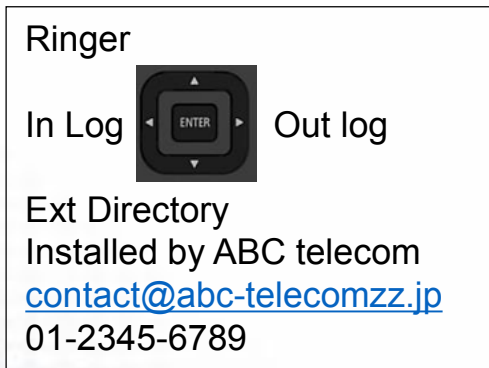
Step 3) Select required picture only and copy it by [Ctrl] + [C] and paste it to other new MS Paint file.

Step 4) Change the size to pixel 176 : 100 for KX-DT680 Digital PT.

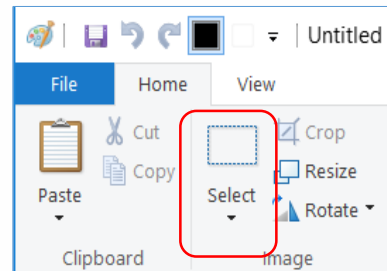
Step 5) Save it as "PDTPICT.bmp" as a 24 bit BMP for KX-DT680 Digital PT.

Step 6) Assign pixel 176 : 100 again using File - Property.

Sample



3) Select and Paste.

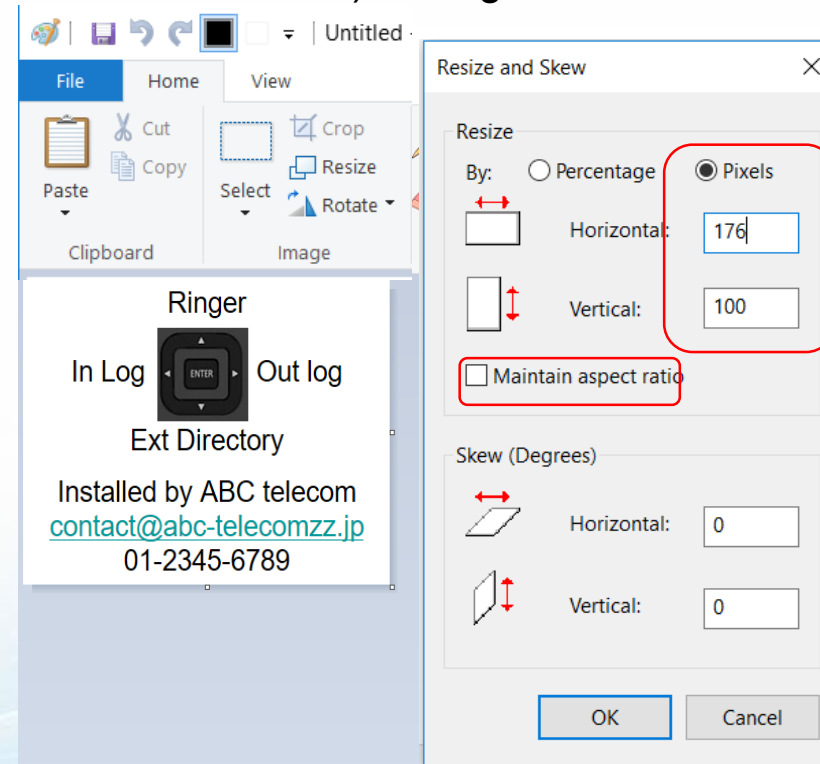


Step 6) Assign pixel 176

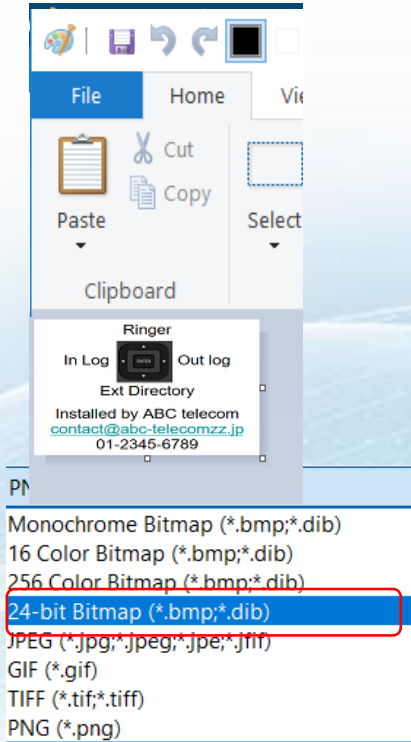
Sample



4) Change size.

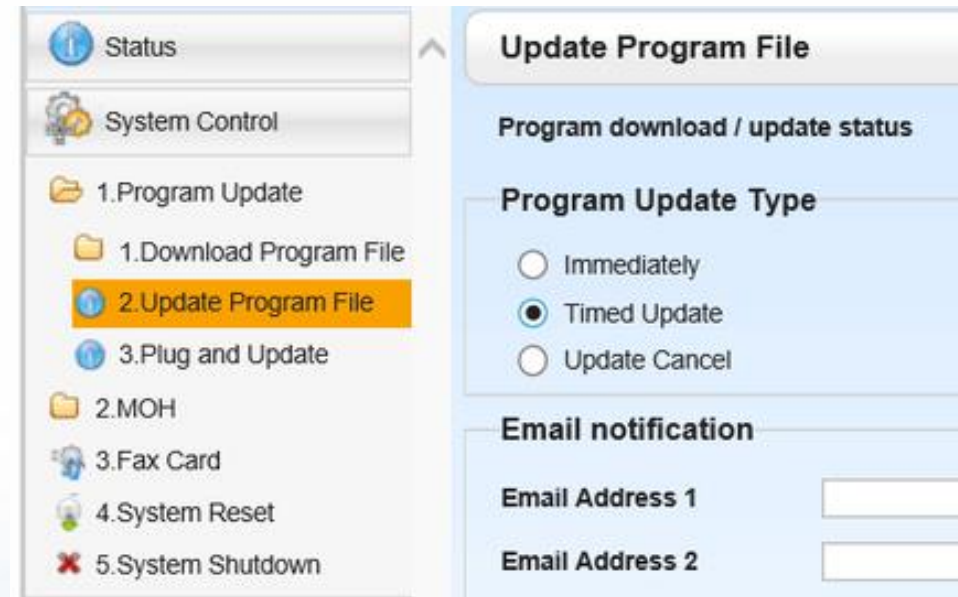
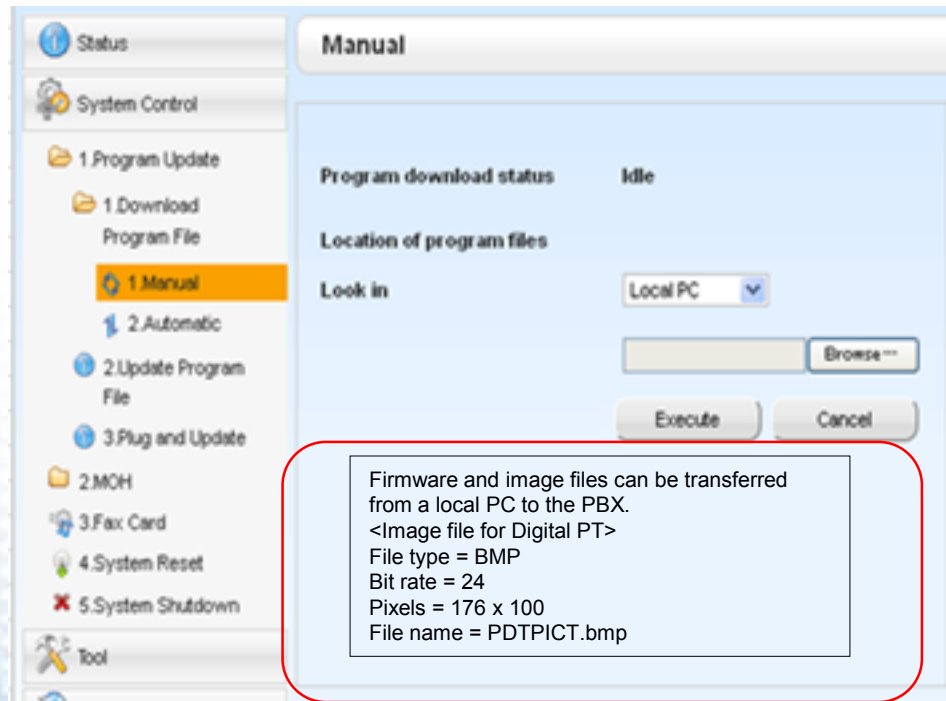


5. Save.



Step 7) Transfer the prepared image file from **local PC** to PBX **as firmware file**.
PBX saves it as “PDTPICT” file for KX-DT680 Digital PT.
PBX saves it as “PNTPICT” file for KX-NT680 IP PT.

Step 8) Transfer it from PBX to KX-DT680 or KX-NT680 **as firmware update**.
The phone cannot be used while the image file is being transferred to the phone.



E-mail feature is not available for image file.

Thank you!

We look forward to your feedback.